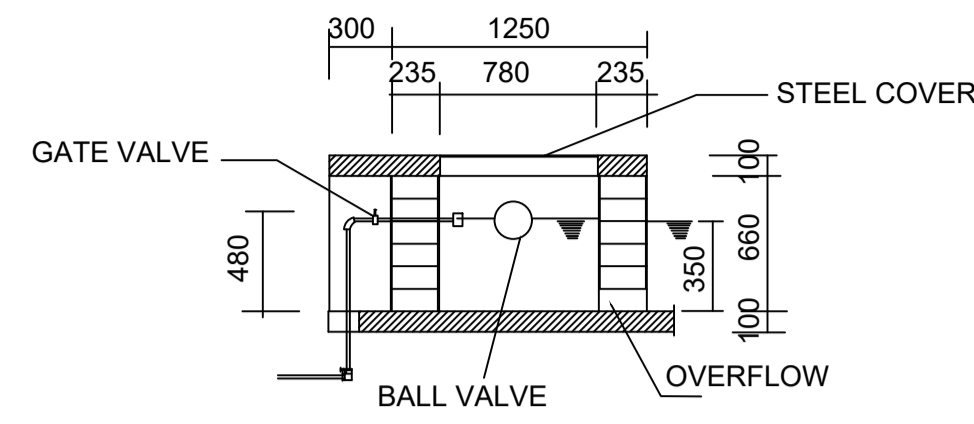


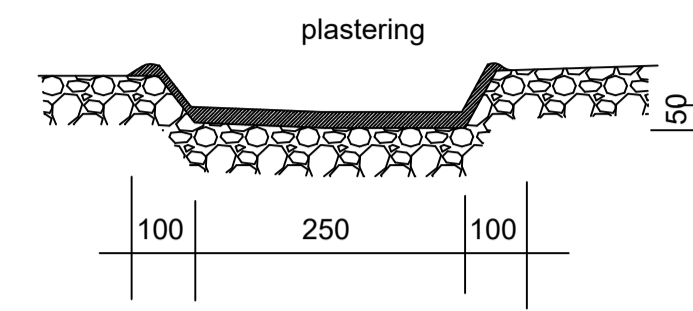
SECTION F - F



SECTION E - E

**Required Fittings**

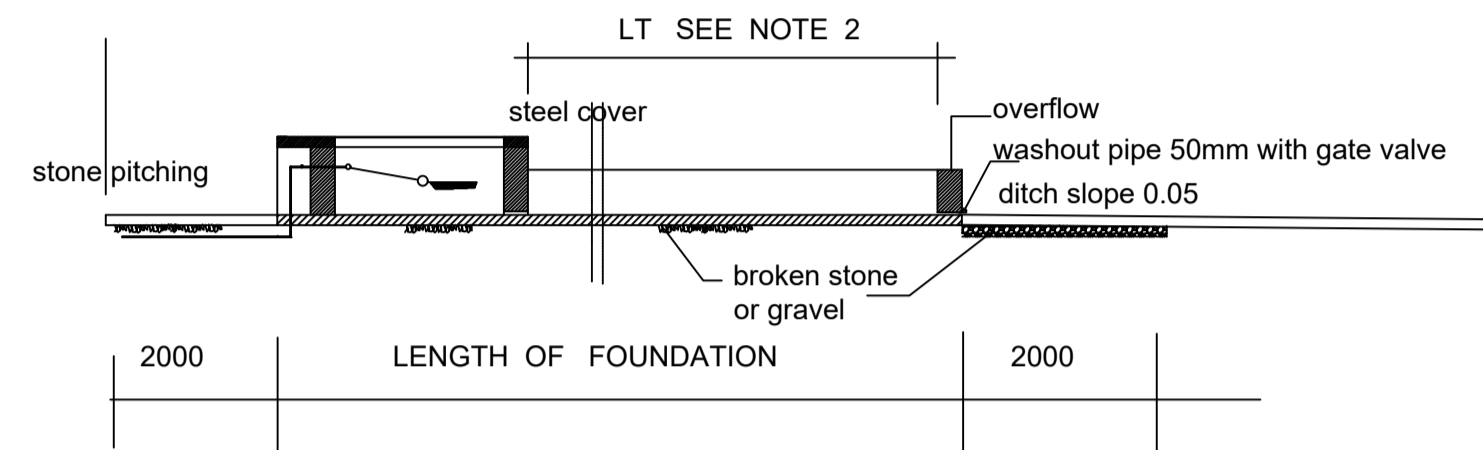
1. 2 no 50mm Elbows
2. 2 no 50mm gate valve
3. 1 no 50mm ball valve



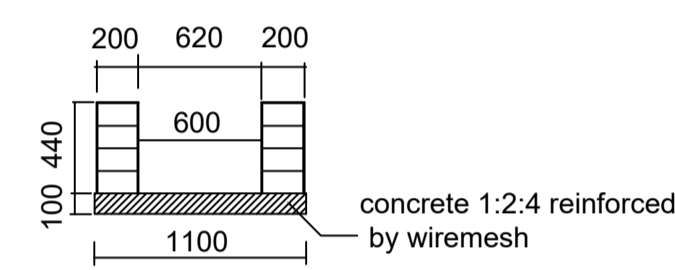
SECTION C - C

**NOTE**

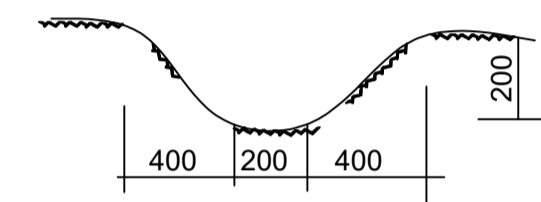
1. Structure in 400x200x100mm cement blocks plastered in 1:3 mix on all showing surfaces.
2. Length of trough according to expected herd size.  
LT = 500m - SMALL CATTLE HEADS, GOATS & SHEEP



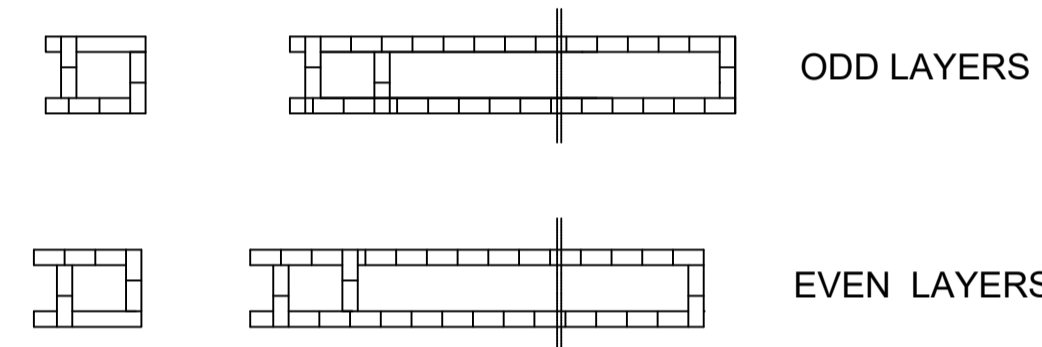
SECTION A - A



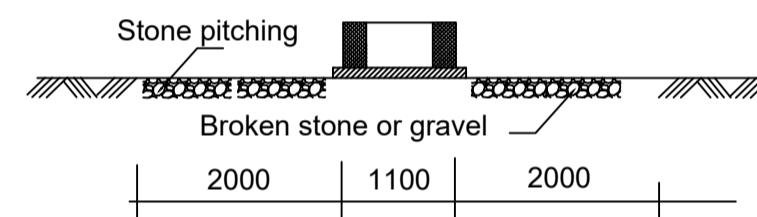
SECTION G - G



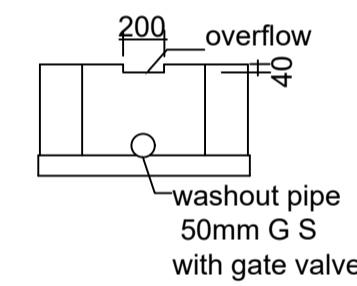
SECTION D - D



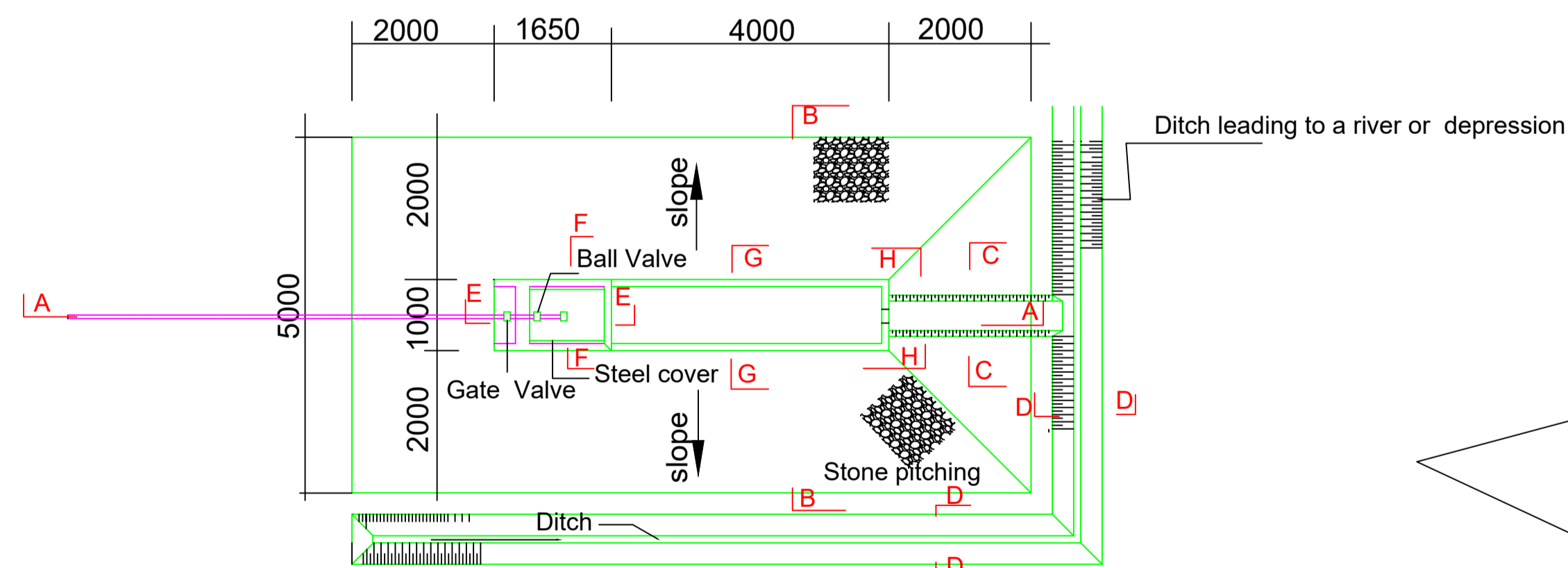
BLOCK LAYING



SECTION B - B

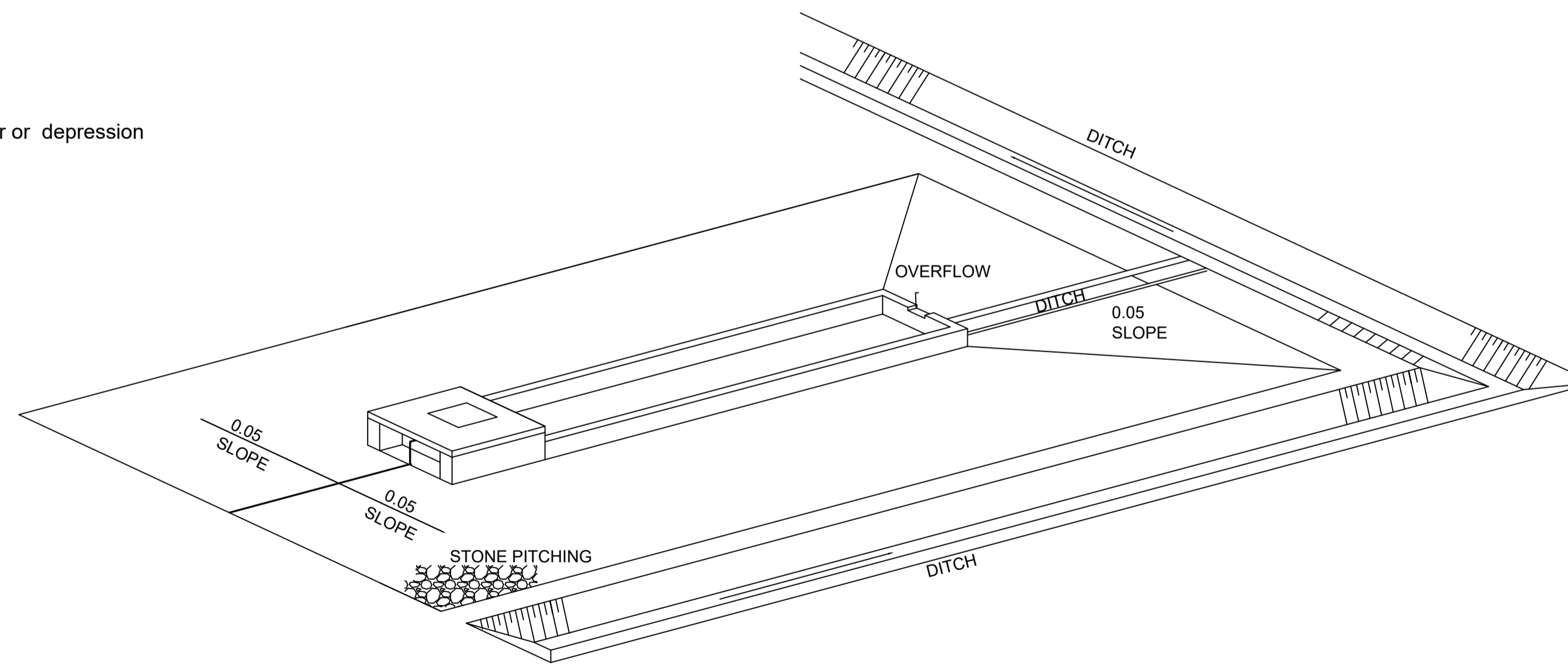


SECTION H - H



Ditch only required if surrounding area slopes towards trough

PLAN OF CATTLE TROUGH



ISOMETRIC VIEW

Rev	Revision	Approved	Date

Client:



CONSULTANT:

Project:

Title:

CATTLE TROUGH

Drawn: KMK Date: 16/06/2025

Designed: KMK Date: 16/06/2025

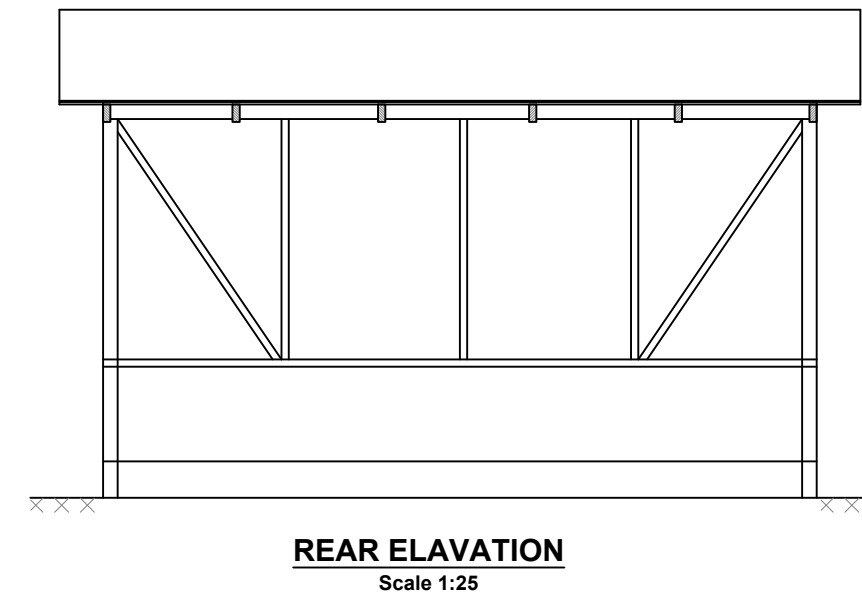
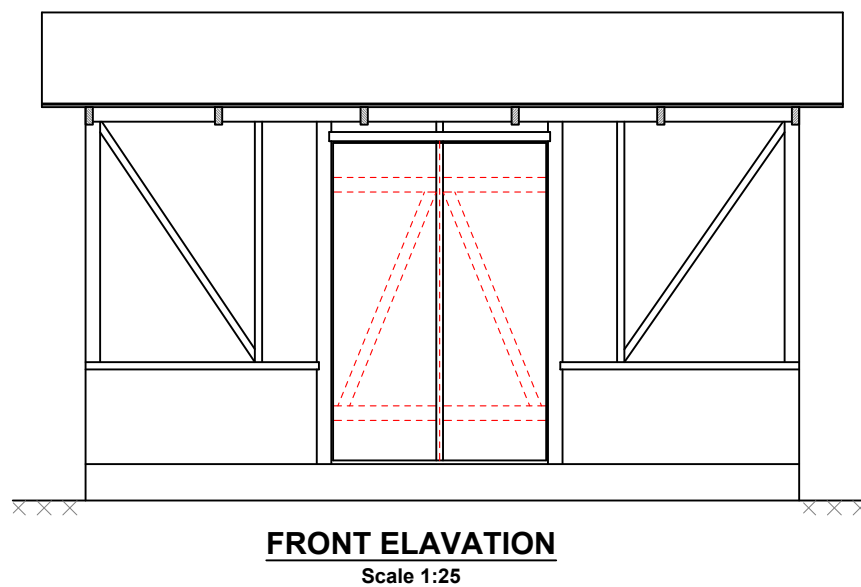
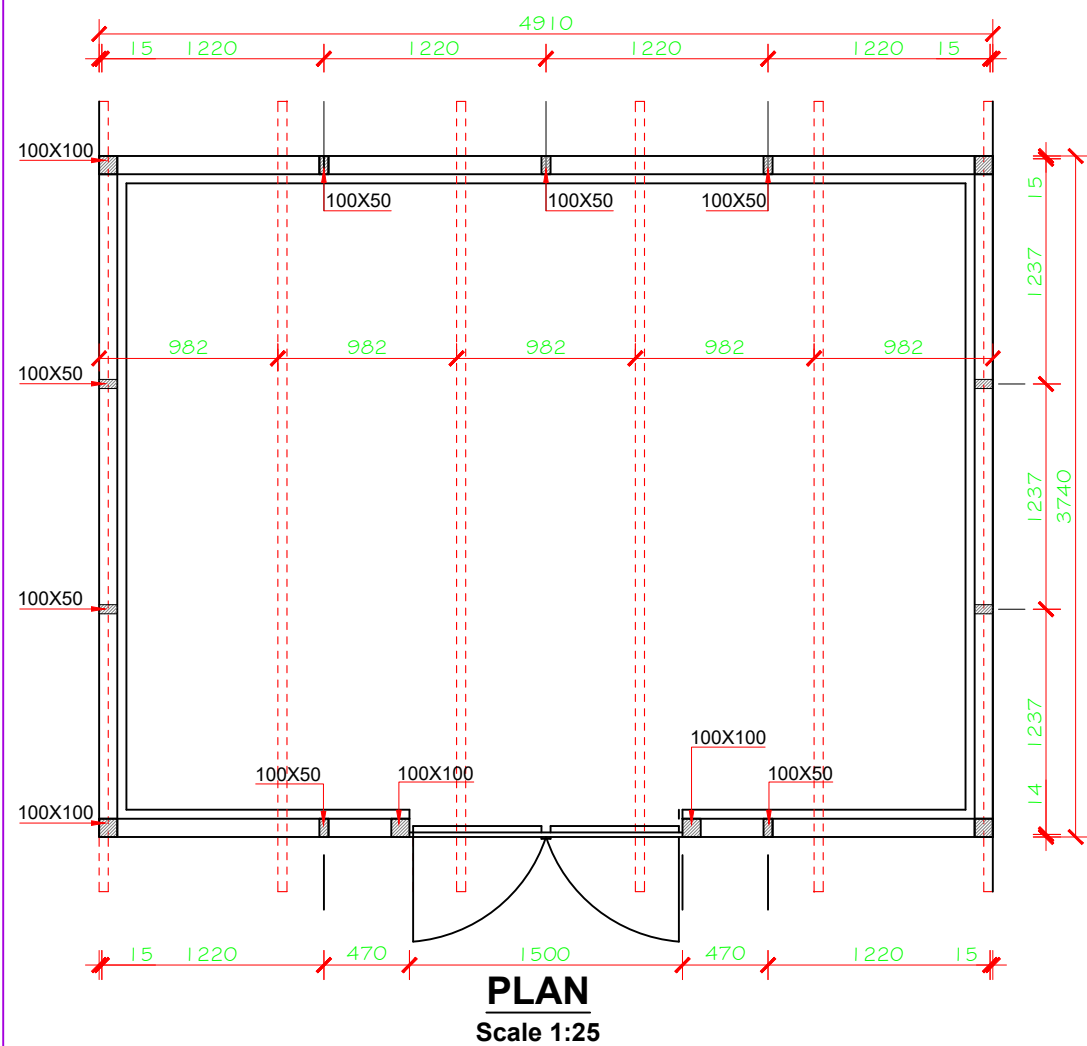
Checked: Date:

Approved: Date:

Drawing No. TAWWDA/KA/06/2025-00 Revision: A

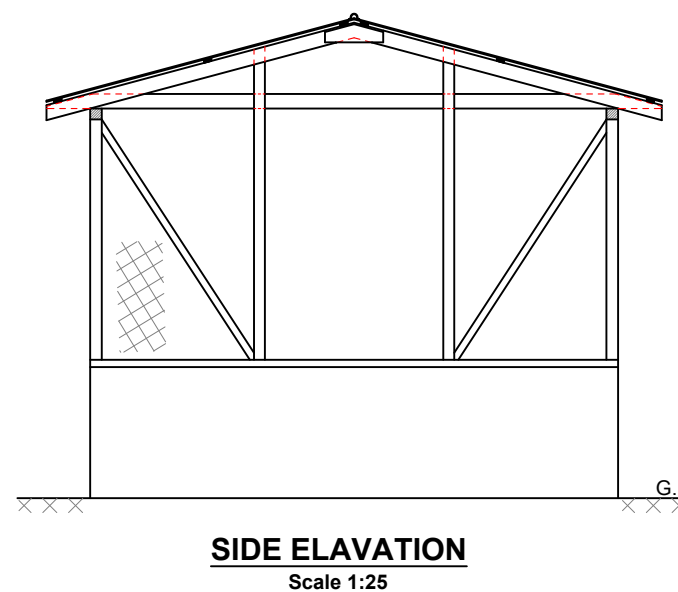
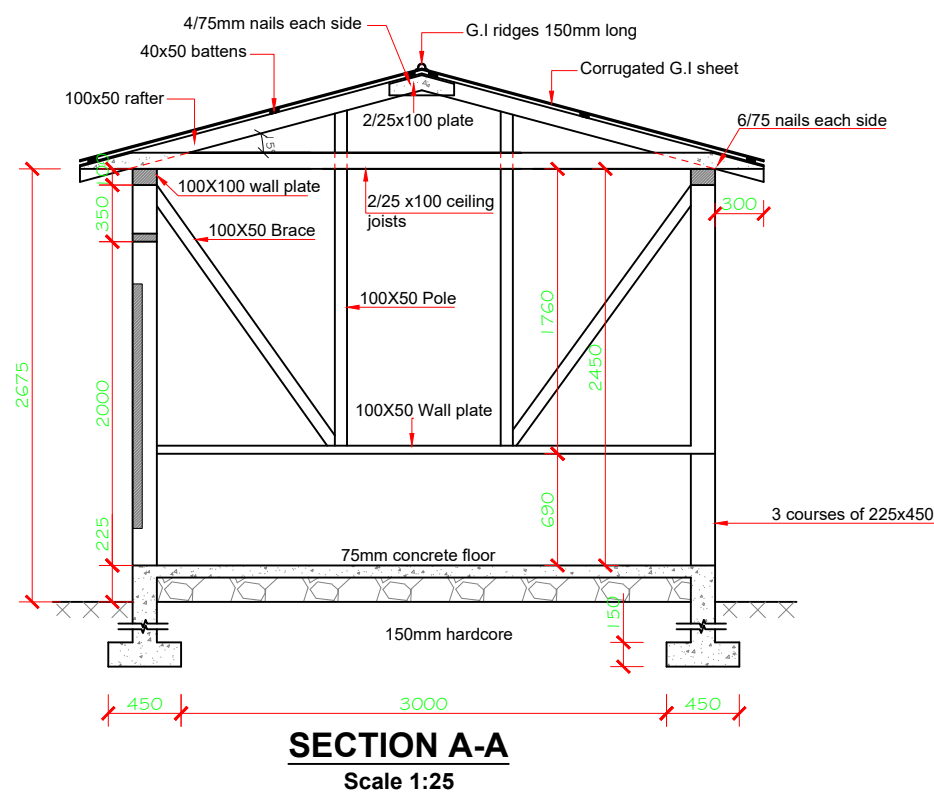
Drawing Scale: AS SHOWN Sheet Size: A1

Drawing Status: TENDER DRAWINGS



**NOTES:**

1. All timber wall frames shall be covered with 50x50mmx8G steel mesh up to the roofing sheets
2. All joints in steel mesh shall be covered with 18x50mm battens
3. All timber shall be from 2nd quality celluled podo or cypress
4. Walls shall be constructed from approved masonry or call coral blocks
5. Concrete mixtures shall be 1:3:6
6. Rafter ceiling joists and plates shall be nailed with 75mm nails
7. 37X50mm battens shall be nailed with 100mm nails
8. Wall plates shall be secured with 12x300mm bolts at 1500mm centres (max. spacing)
9. Doors shall be made as a match boarded doors ledged and braced with 18x100mm and screwed with 18mm galvanized screws
10. Door hardware: 2pair 200mm hinges, Tee, Iron  
2 Bolts barrel Iron 125mm.

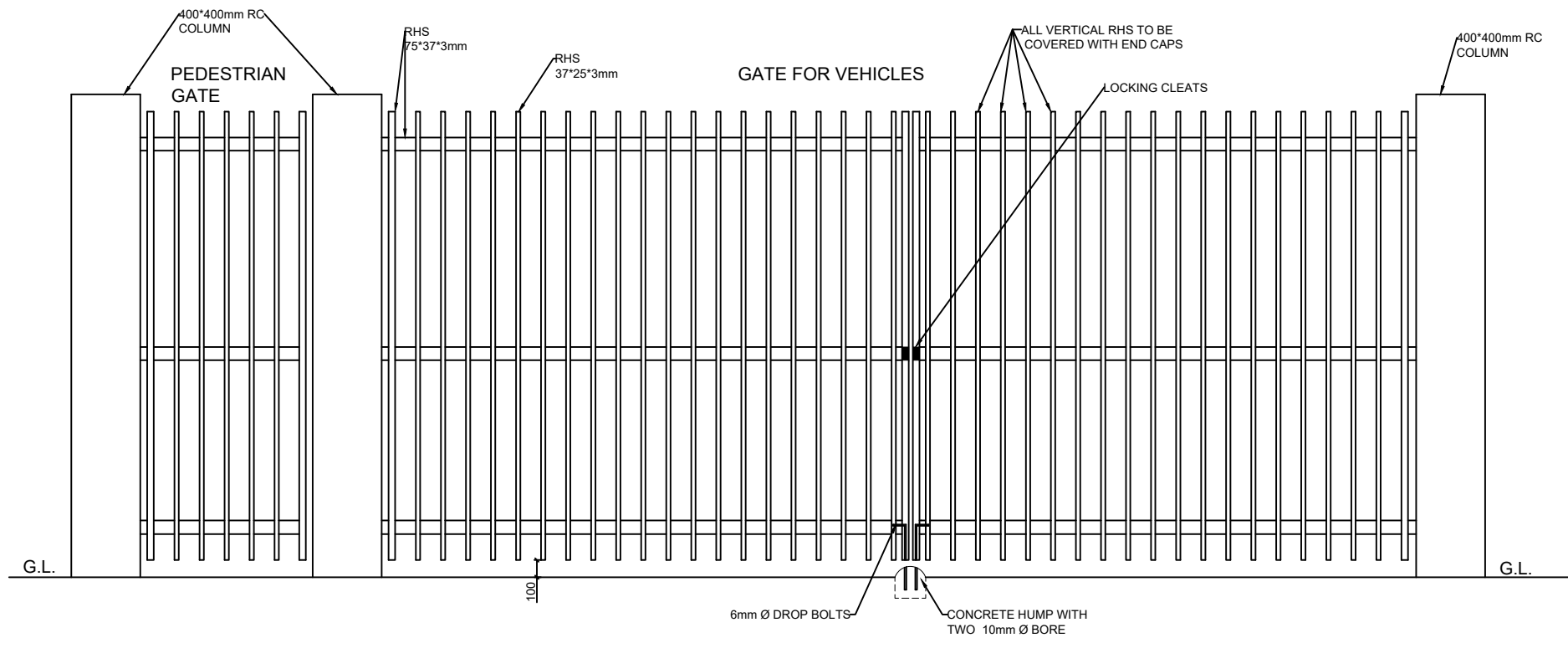


MINISTRY OF WATER & IRRIGATION- MAJI HOUSE

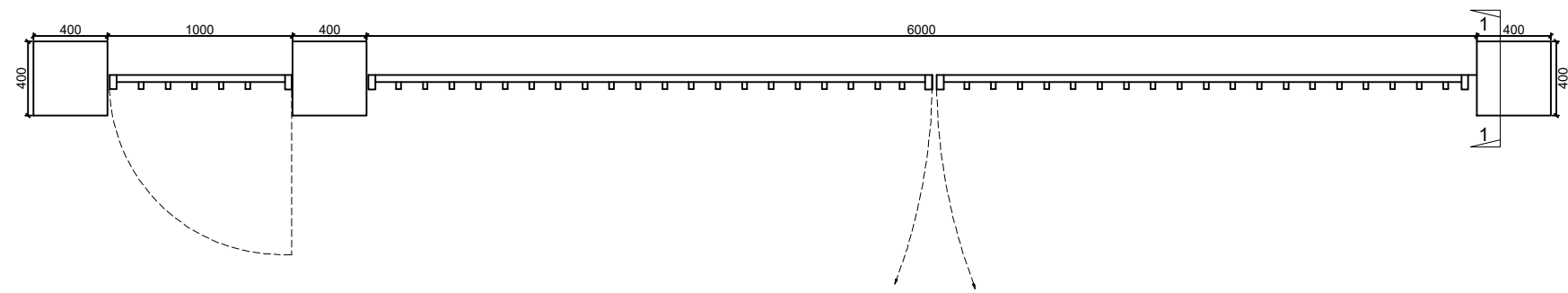


TYPE 4880X3710MM PUMP HOUSE  
PLAN, SECTION AND ELEVATIONS

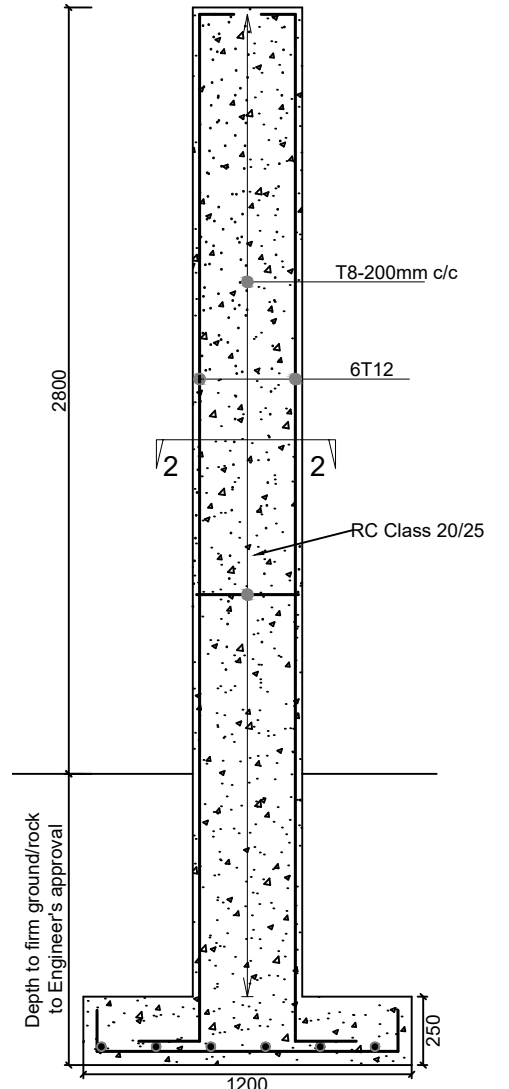
DESIGNED			SHEET 1 OF 1
TRACED	Mwanyalo	March 1978	SCALE: AS SHOWN
DIGITIZED	W. AMWATA	MAR 2010	DRG. NO.
CHECKED	ENG. B.I. KASABULTI	MAR 2010	M.W.I
APPROVED	D.W.S	JUNE 2010	001-STD-005



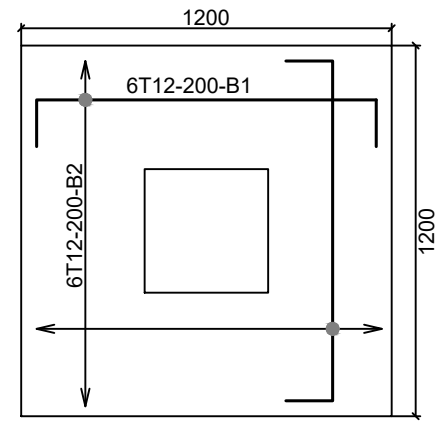
**ELEVATION**



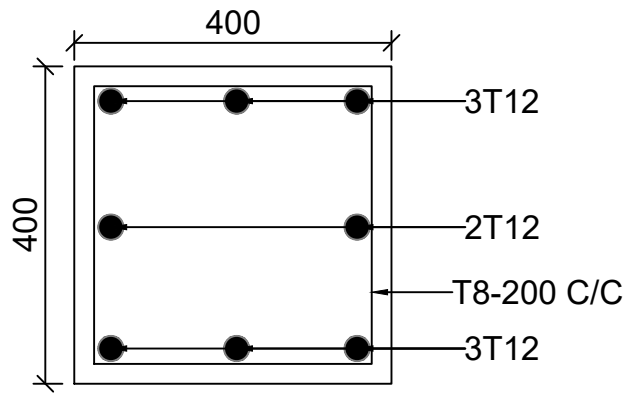
**PLAN VIEW**



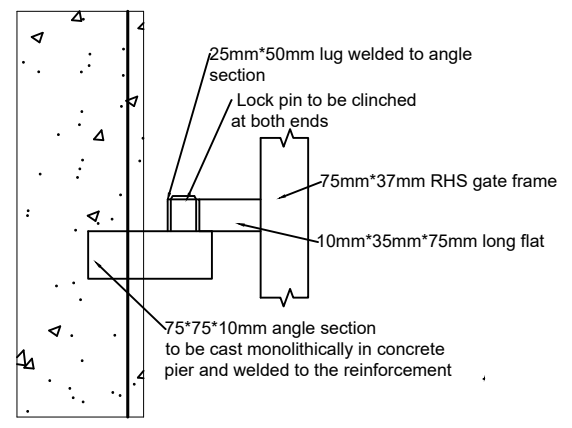
**Gate Pier details Section 1-1**



**COLUMN FOOTING DETAILS**

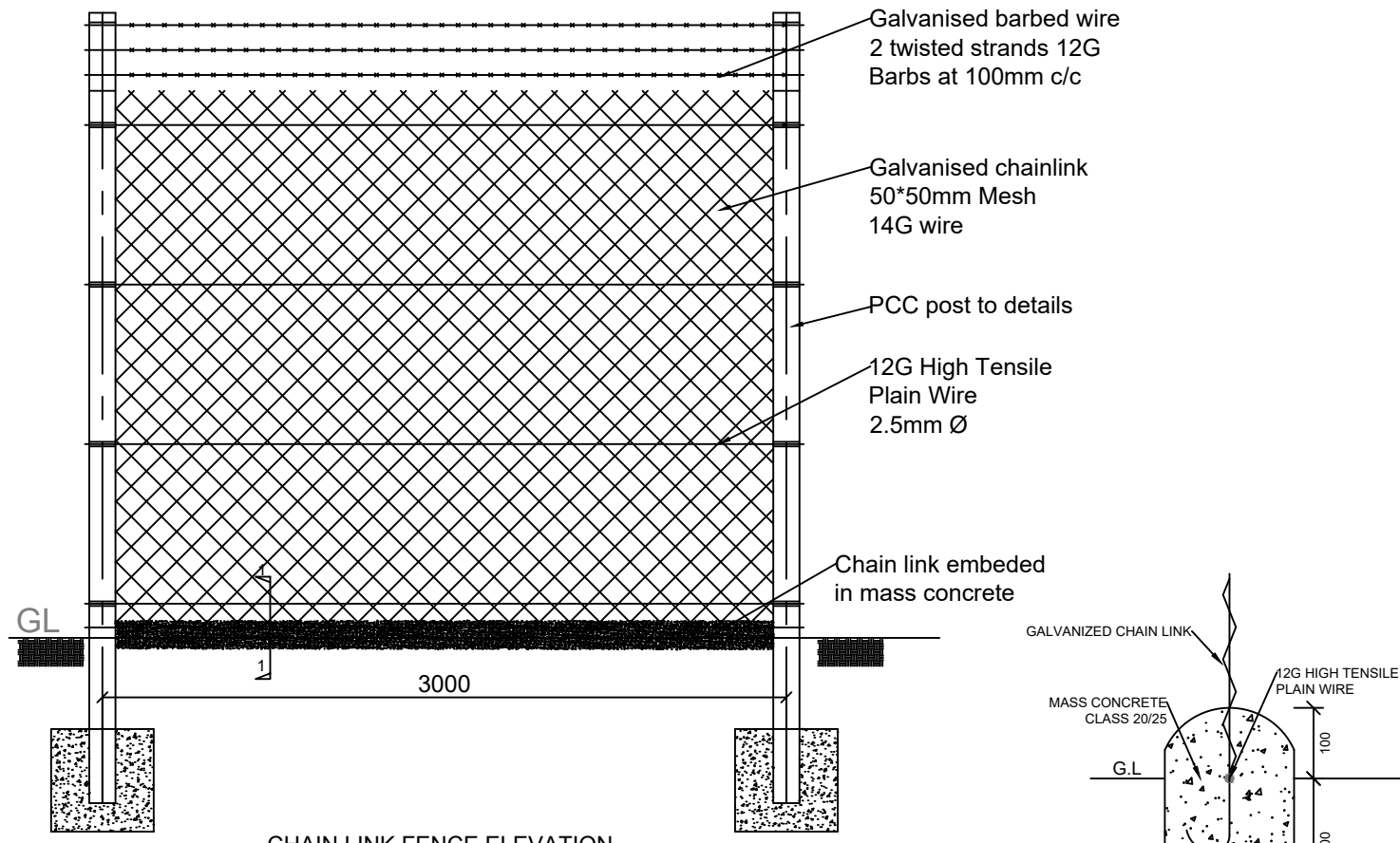


**SECTION 2-2**

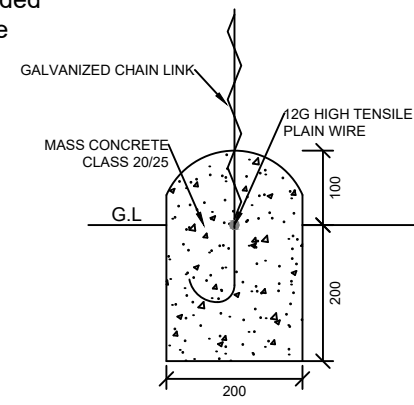


**Hinge connection details**

Revision	Approved by	Date	Ref: NO.
	K.Martin	2025/06/17	
TYPICAL DETAILS			
Revision		GATE DETAILS	
Approval	K.Martin		
Check	DMO		
Design	K. Martin		
Drawing	K.Martin		
Date	2025/06/17	Drawing No.	TAWWDA -TD - 005



CHAIN LINK FENCE ELEVATION



SECTION THRU' THE FENCE SECTION 1-1



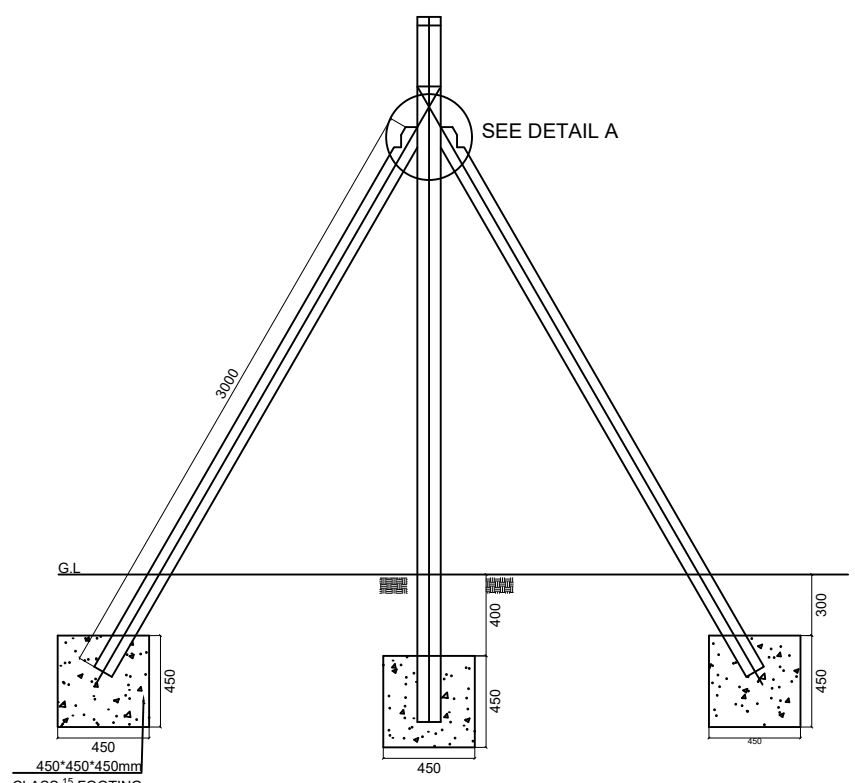
Image of Stay Post



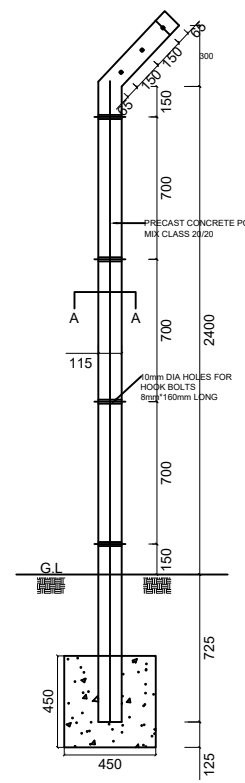
Image of Corner Post Type 1 for corner angle < 135°



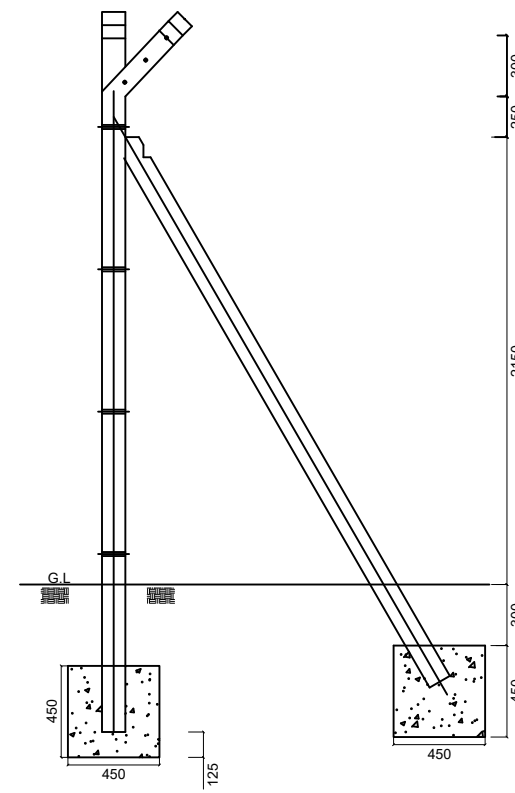
Image of Corner Post Type 2 for corner angle > 135°



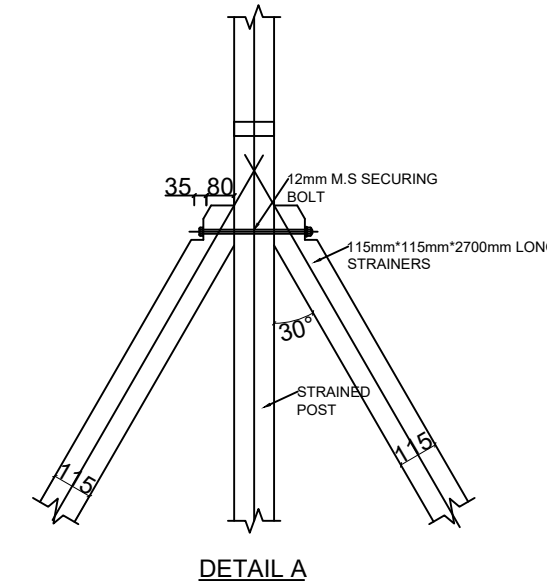
DETAILS FOR STAY POSTS



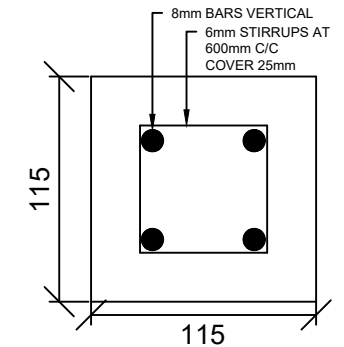
DETAILS FOR INTERMEDIATE POST AT 3.0m C/C



DETAILS CORNER POSTS



DETAIL A



SECTION A-A

Revision	Approved by	Date	Ref. NO.
	K. Martin	2025/06/17	
Revision		TYPICAL DETAILS	
Approval	K. Martin		
Check	DMO		
Design	K. Martin	FENCE DETAILS	
Drawing	K. Martin		
Date	2025/06/17	Drawing No.	TAWWDA -TD - 04